

MONTHLY MEMBERSHIP PROGRESS REPORT

District 5M 2

Results as of: 5/31/2020

GMT:

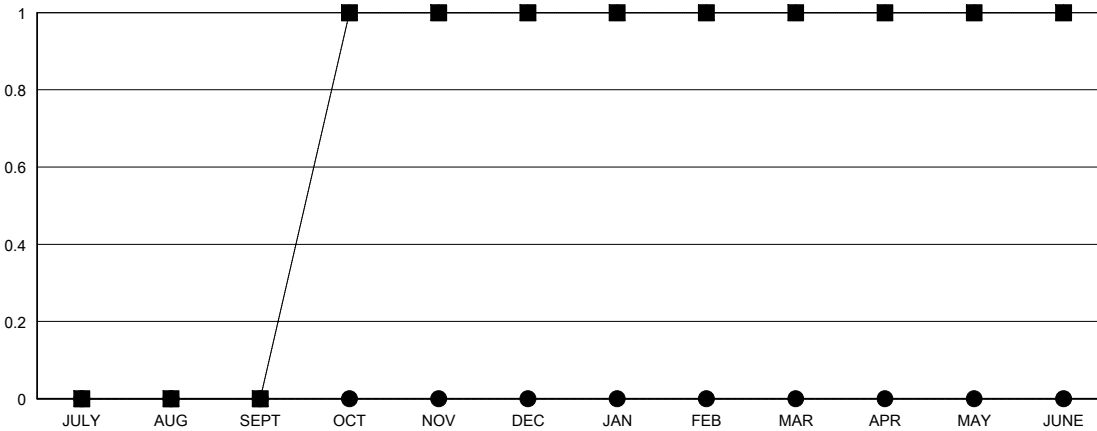
LOCATION MINNESOTA

GMT CA

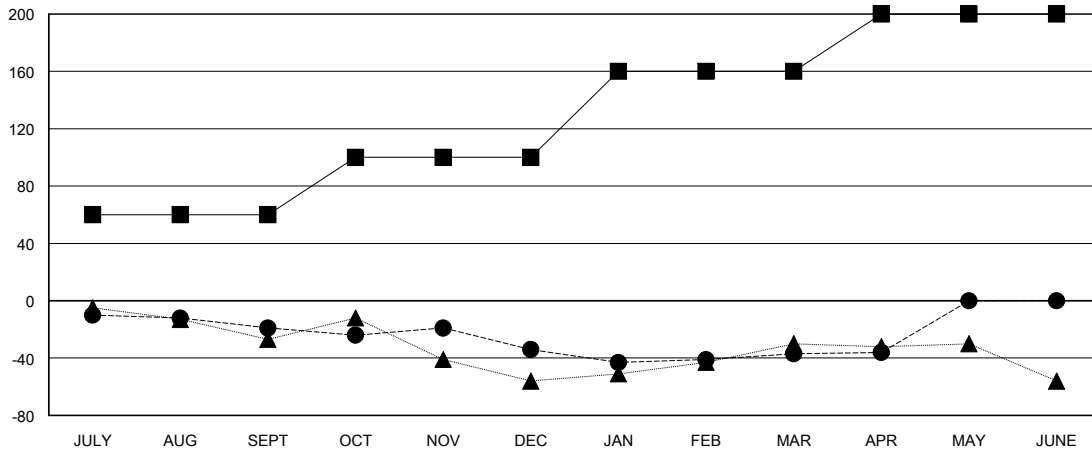
Clubs			
RESULTS FOR 2019-2020			
QUARTER	NEW CLUB GOAL	NEW CLUBS	DROPPED CLUBS
JULY/AUG/SEPT	0	0	0
OCT/NOV/DEC	1	0	0
JAN/FEB/MAR	0	0	0
APR/MAY/JUNE	0	0	0

Members			
RESULTS FOR 2019-2020			
QUARTER	MEMBER GROWTH NET GOAL	MEMBER GROWTH ACTUAL	DROPPED MEMBERS ACTUAL (including transfers)
JULY/AUG/SEPT	60	25	41
OCT/NOV/DEC	40	35	50
JAN/FEB/MAR	60	39	39
APR/MAY/JUNE	40	10	9

GOALS AND ACTUAL NEW CLUBS CUMULATIVE



GOALS AND ACTUAL MEMBERS CUMULATIVE



DROPPED CLUBS: 0	37 CLUBS OF 65 ADDED 1 OR MORE NEW MEMBERS	<u>GENDER DISTRIBUTION</u>	
		MALE	1,629 (69.56%)
		FEMALE	713 (30.44%)
<u>DROPPED MEMBERS</u>		TOTAL FAMILY UNIT MEMBERS 390	
DECEASED	23	FAMILY MEMBERS PAYING HALF DUES 198	
CLUB CANCELLED	0		
OTHER	116		
TOTAL	139		

[CLICK HERE FOR CUMULATIVE MEMBERSHIP DATA](#)